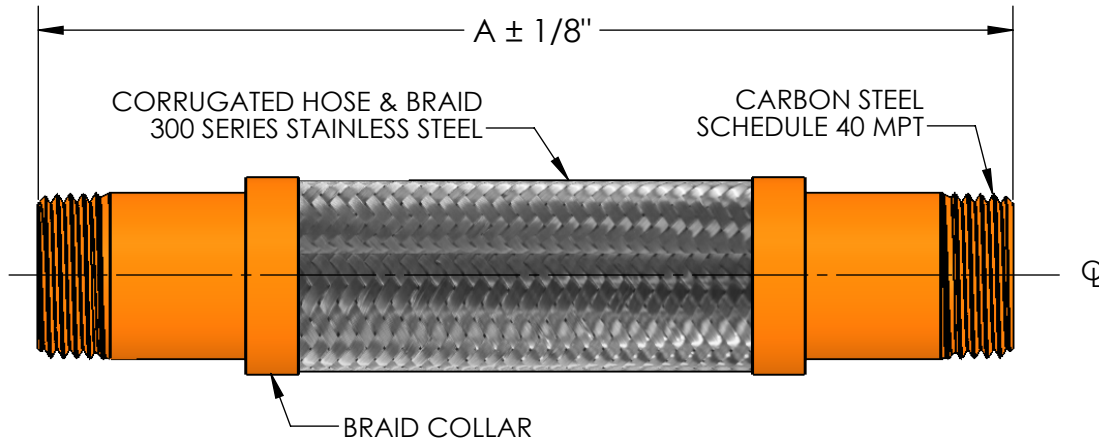


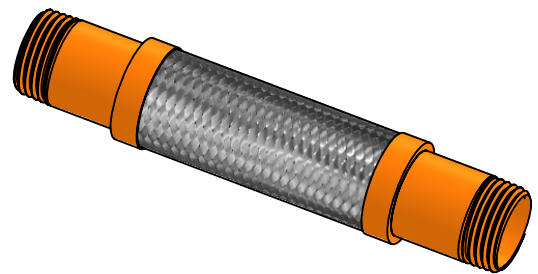
**MODEL SSTUL  
THREADED FLEXIBLE PUMP CONNECTOR**



CONTACT FOR ADDITIONAL SIZES AND MOVEMENTS.

QTY	PART NUMBER	PIPE SIZE		A	PRESSURE RATING (PSI)	WEIGHT (LBS)	INTERMITTENT LATERAL OFFSET
		INCH	MM				
	SSTUL0050	1/2"	15	9"	300	0.5	±1/8"
	SSTUL0075	3/4"	20	10"	300	0.8	±1/8"
	SSTUL0100	1"	25	11"	300	1	±1/8"
	SSTUL0125	1-1/4"	32	11"	300	1.5	±1/8"
	SSTUL0150	1-1/2"	38	12"	300	2	±1/8"
	SSTUL0200	2"	50	13"	300	3	±1/8"
	SSTUL0250	2-1/2"	65	14"	300	4	±1/8"
	SSTUL0300	3"	80	15"	300	6	±1/8"
	SSTUL0400	4"	100	16"	175	8	±1/8"

SUITABLE FOR USE IN DRY PIPE SYSTEMS  
TEMPERATURES TO -40°F.



**NSF 372 - LEAD FREE**

The wetted surface of this product contacted by consumable water contains less than one quarter of one percent (0.25%) of lead by weight. Material complies with state codes and standards, where applicable, requiring reduced lead content.

CUSTOMER: \_\_\_\_\_

PROJECT: \_\_\_\_\_

ENGINEER: \_\_\_\_\_

REV. 1	REVISED OFFSET	DATE 02/05/2025
		2323 W. HUBBARD ST. CHICAGO, IL 60612 TEL: 312-738-3800 FAX: 312-738-0415 WWW.METRAFLEX.COM
<b>MODEL SSTUL</b> THREADED FLEXIBLE PUMP CONNECTOR		
DRAWN BY: <b>JIMA</b>		DATE: <b>8/9/2021</b>
APPROVED:		DATE:
SCALE: N/A	DRAWING NUMBER: SSTUL	